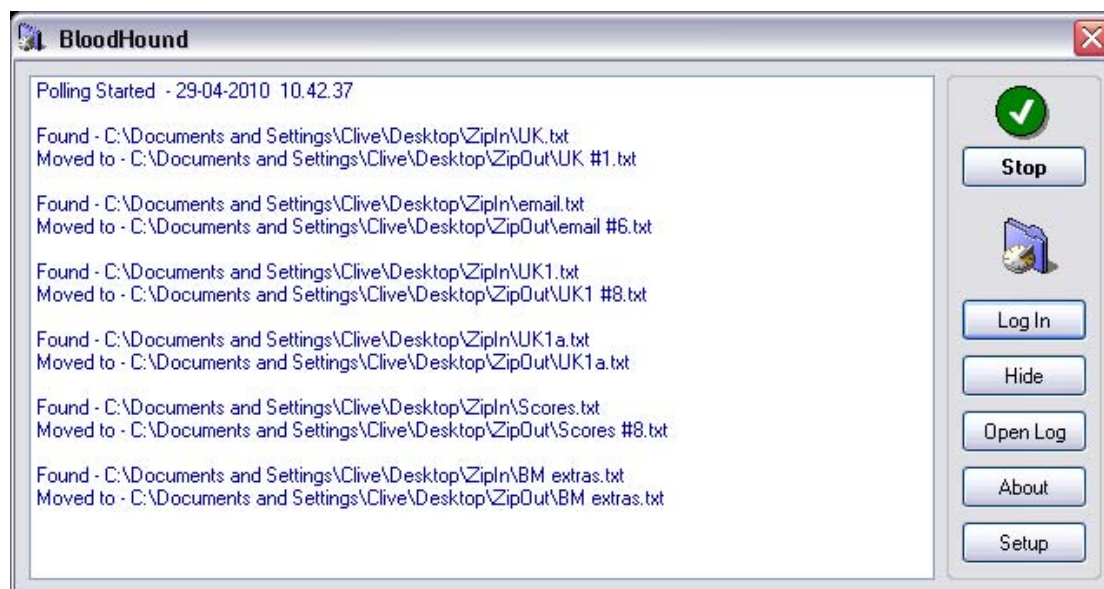


---

# BloodHound

'BloodHound' will search for and move selected files from one location to another. Found files are processed in FIFO (First In First Out) order. It can be used in conjunction with programs using 'Hot Folders' to process files.



This is the main screen. The main listing shows the most recent operations carried out by 'BloodHound'. The full listing is saved in an Event Log which can be turned On or Off.

There are controls to Start and Stop 'BloodHound' from searching for files.

A 'Hide' button which 'Hides' 'BloodHound' in the 'System Tray'

(on the right side of the 'Windows' Taskbar).

When 'BloodHound' starts up it will automatically 'Hide' if it was running (Green Mode) when it was last closed down.

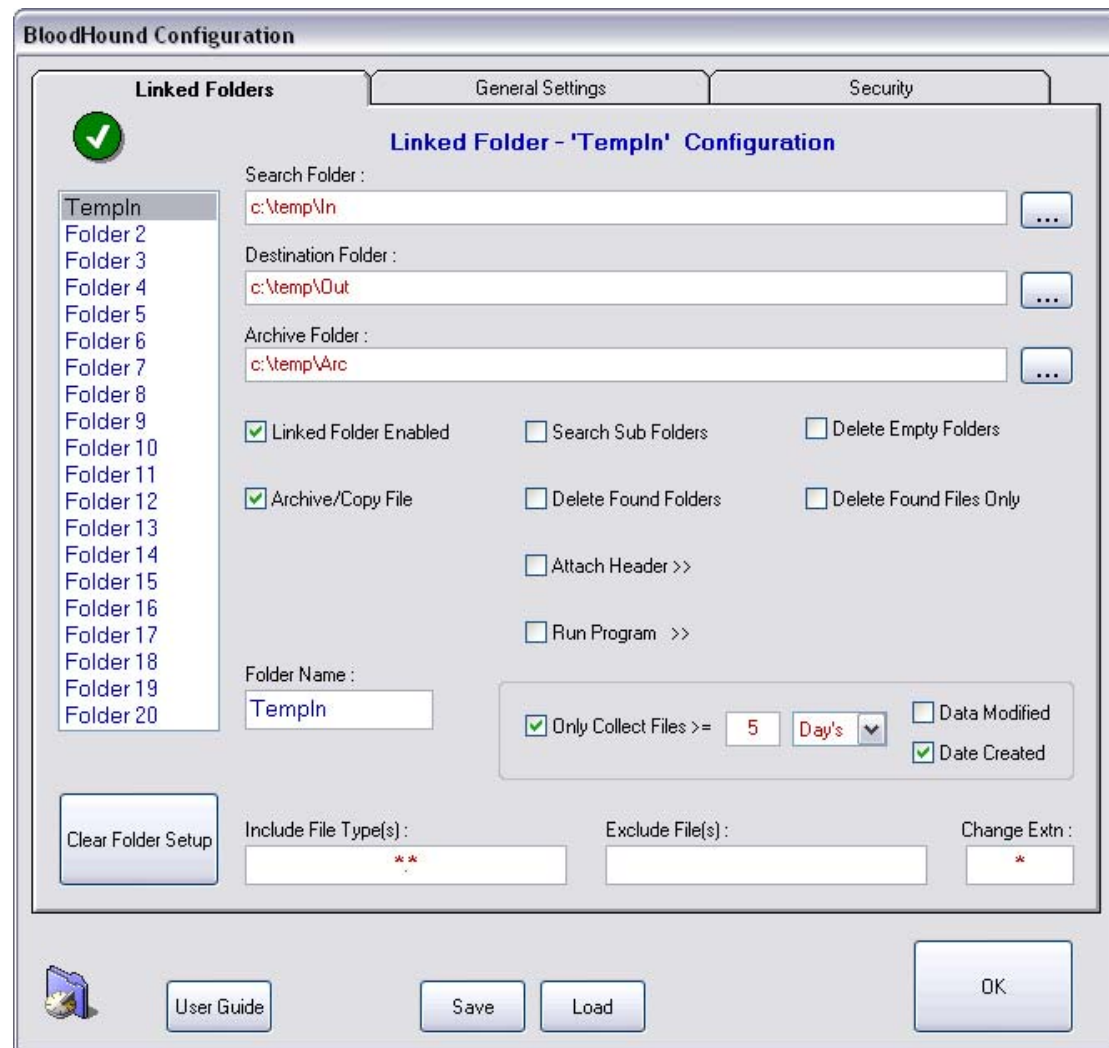


To Restore to Screen mode, Right Click on the Blue Folder Icon in the System Tray and select 'Restore'.

'Open Log' option allows you to read the saved Event Logs .

'Setup' takes you to the program configuration screen shown on the next page.

This screen allows you to configure up to 20 'Linked Folders' and have various different settings for each one.



The file search operations are carried out in Folder Number Order. So Folder 1 is processed before Folder 2 etc.

To Select a 'Linked Folder' click on the Folder Number on the Left of the screen.

The Top part of the form is for selecting different folder locations.

*Search Folder:* This is the Top Search Folder that 'BloodHound' will search from to find files. If the '*Search Sub Folder*' option is selected then all folders under this folder are searched as well. Click on the Browse button to select.

*Destination Folder:* This is the folder that 'BloodHound' will move the found files into.

---

*Archive Folder:* 'BloodHound' will archive(copy) the found files to this folder before moving them to the destination folder if the '*Archive/Copy File*' option is selected.

*'Link Folder Enabled'* will enable 'BloodHound' to use this folder setup.

*'Search Sub Folders'* will make 'BloodHound' search for files in folders underneath the search folder.

*'Archive/Copy File'* enables the Archive option.

If the '*Delete Found Folders*' option is selected then all folders that contained files found by 'BloodHound' under (but not including) the Top search Folder are removed.

*'Delete Empty Folders'* will remove all empty folders found. If the '*Delete Found Files*' option is chosen then found files are deleted not moved to the Destination Folder.

**\*\* USE THE ABOVE OPTION WITH CAUTION. \*\***

*'Attach Header'* When selected 'BloodHound' will first look for a file with the same name in the 'Search Folder' and attach it to the front of the found file.

e.g. *Testdoc.xml* will be attached to *Testdoc.pdf*.

(In the above example it would be good practice to enter '.xml' as an excluded file. This would ensure that the files are not joined in the wrong order.)

If no file is found then the file selected in the dropdown list will be attached. These header files should all be put in the 'Headers' folder that is in the *Bloodhound* install folder.

*'Run Program'* option allows you to run a program/batch file with the found file. An example program is installed with 'BloodHound' called 'RePlace'. This will automatically search and replace text in a binary or ascii file. There is a readme.txt file that explains the operation in the 'RePlace' folder. If you want to run a batch file 'BloodHound' will pass the name of the found file to the batch program and it can be called using the normal '%1' method.

BloodHound can be told to only collect files when they are as old as the selected number of *Days, Hours* or *Minutes*. This can be set to look at the Date Created or the Date Modified

---

The 'Linked Folder' can be renamed using the 'Folder Name' box.

The 'Include File Type (s)' text box tells 'BloodHound' what files to search for. Wildcard entries can be used such as **\*.\* \*.pdf test.???**

To search for multiple file types, use the ";" separator.  
e.g. **\*.pdf;\*.txt;\*.jpg**

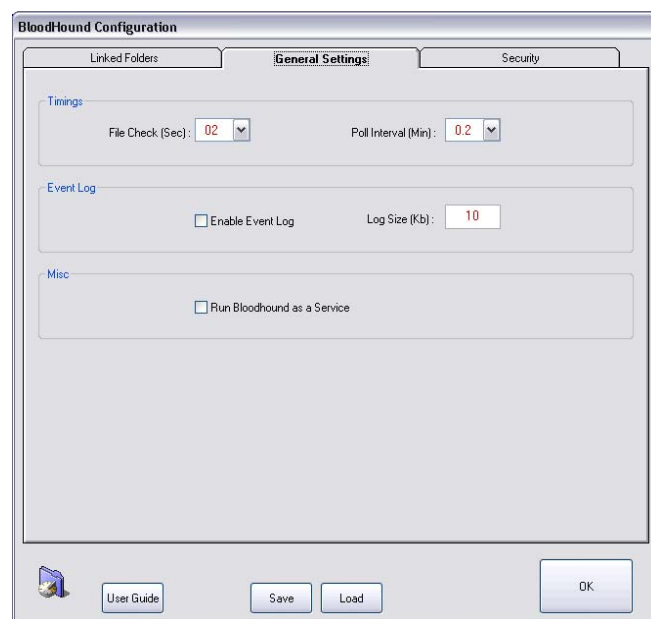
'BloodHound' will ignore files *Ending* with the text in the 'Exclude File' text box. No Wildcard characters such as \* or ? can be used. Entries for this box could be: **pdf test.doc** or even just **f**

To ignore multiple file types, use the ";" separator.  
e.g. **pdf;txt;jpg**

The file extension of the found file can be changed.  
E.G. typing 'doc' in this box will change the file extension of all found files to .doc. So 'test.rtf' becomes 'test.doc'

'Clear' will clear the configuration of the current Linked Folder

*The second tab contains General settings.*



The Polling Interval (the frequency that 'BloodHound' will search for files) can be set from 0.1 min (6 sec) to 60 min.

The 'File Check' time can be set between 1 and 60 seconds.

This is the amount of time 'Bloodhound' waits after it has found a file and before it checks if the file is complete. Selecting a high setting for this will slow down the file moving operations.

The Event Log can be switched On or Off and the Log size adjusted. The log size is measured in Kb (1024Kb = 1mb)  
The New Log is always called 'Current Log'. When the log reaches the chosen log size then it is copied to a new file and given a title which contains the date and time the log was originated. The Current Log is then reset.

---

### *Example Workflow 1:*

Your program is copying various files into a file structure that 'BloodHound' is set to search. You want to filter out the PDF files only and delete all other files and folders.

You set 'Linked Folder 1' to search for PDF files (\*.pdf). This will move all PDF files into the Destination Folder.

You set 'Linked Folder 2' to search for all files (\*.\*) and you have selected the 'Delete Files' option. This will delete all files found and should work OK. But if another PDF file is copied into this file structure while this is happening then this file will be deleted as well. If you set the 'Link Folder 2' 'Ignore File' text to be PDF then no problems with lost files should occur. And the PDF file will be picked up on the next search.

---

### *Example Workflow 2:*

You put different types of files into a repository or folder. They are a mixture of Print ready files and office files.

Setup 'BloodHound' Linked folders to search the repository.

'Linked Folder 1' can search for PDF files and PS files. Both can be linked to a 'Hot Folder' for direct printing.

'Linked Folder 2' can copy the remaining files into another folder for more processing.

---

### *Example Workflow 3:*

You want to attach Job Tickets that have information for the printer (Paper Stocks, Exception pages, Finishing Options etc) to your print documents.

You copy the pre defined Job Ticket's to the *Headers* Folder. You then can set up the *Linked Folders* to attach the various Job Tickets to the incoming print file. The destination folder will be a 'Hot Folder' for the Print Queue.

All you have to do to print your documents now is to drop your file into the '*Search Folder*'. *Bloodhound* will attach the Job Ticket and put the completed file into the printers Hot Folder.

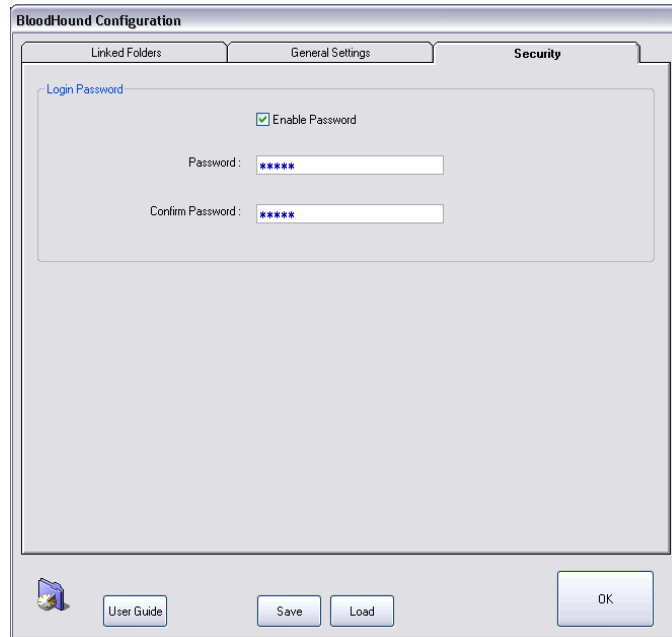
### *How to create a Xerox Job Ticket:*

Use your Xerox printer driver to print a document with all the features you require selected in the job ticket.

Choose the 'Print to File' option to create a print file.

Open this print file with a text editor such as *Notepad* or *Wordpad*. Everything before **%!PS-Adobe-3.0** (If it's a postscript file) is the Job ticket. Copy this to a new file.

---



You can set a Login password. If this is enabled then a password is required to **Start/Stop** polling, Change the **setup** parameters and to **Exit** the program.

---

## Running BloodHound as a Windows Service.

To automatically run 'BloodHound' on startup then a shortcut to the program file can be copied into the 'Startup' folder for either the individual user or for all users.

This would enable 'BloodHound' to run when a user has logged onto the PC.

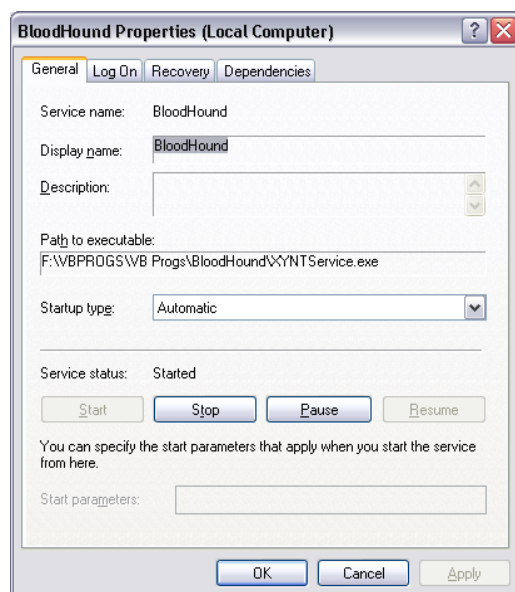
To Run 'BloodHound' without the need to logon, it has to be run as a 'Windows' Service.

To enable this just choose this option on the 'Configuration' screen.

When chosen 'BloodHound' will be installed as a service and will run automatically on boot up.

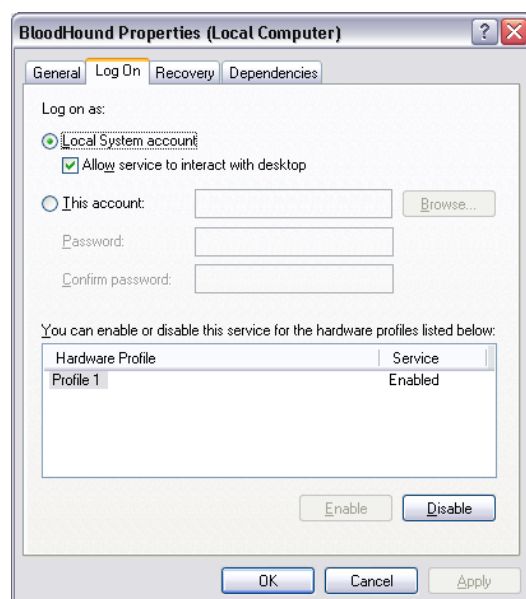
If you need to change the startup settings you will need to be logged on with the appropriate rights.

Goto Windows Start menu 'Administration Tools/Services'  
Highlight and right click on 'BloodHound' in the services program list and choose 'properties'.



You can alter the Startup type.

And change the logon properties.



---

**Register BloodHound**

The Registration Code can be obtained by sending an EMail to the address below, with the following information.

Your Name, Phone No., Company Name, Xerox Analyst Name and PC Code. Click the Link below to go to your email program.

**Support@pam.pciot.com**

PC Code :

Registration Code:

'BloodHound' needs to be registered. The Unregistered version will only process about 20 files. It will then need restarting. It will also not be able to 'Hide' in the Windows System Tray.

To Register, Click on the 'About' button and then on 'Register'. You will see the following screen.

To Obtain the Registration Code either make a note of the PC code or click on the PamSoftware Link to email.

---

*Notes:*

If 'BloodHound' finds a read only file it will change the attributes to normal. This enables the file to be moved to the new location. Files that are 'Hidden' will not be seen by 'BloodHound'

When moving files, if a file of the same name is encountered then 'BloodHound' will rename the file with a number before the file name. e.g. '(1) Test.pdf'.

---

*Please Note:*

'BloodHound' is supplied on an 'as is' basis. Although charges may be made for supply, installation and training, the program is NOT a supported product of Xerox (UK) Xerox Corporation, or any of their subsidiary companies.

Xerox Helpline/PMC support is NOT available, neither is Ongoing Analyst support (either on-site or by telephone) other than that which may be provided on a chargeable basis and/or as the subject of any specific agreement between the program user and the supplier of 'BloodHound'.

No responsibility can be accepted for any data loss incurred by using this program.